

GRIDMEUPFX ENHANCED FOREX TRADING ROBOT

(EXPERT ADVISOR)



Designed for the Metatrader 4 trading platform

<http://gridmeupfx.is-leet.com>

Version 3.0
Copyright© 2011

Contents

Disclaimer and Risk Warnings.....	3
<i>U.S. Government Required Disclaimer</i>	3
Getting Started with GridMeUpFX.....	4
Configuring MetaTrader 4.....	18
Installing the GridMeUpFX Robot.....	20
Using the GridMeUpFX Robot.....	26
Setting Up For Trading.....	28
Preparing To Trade.....	32
Stop Trading.....	34

Disclaimer and Risk Warnings

Trading any financial market involves risk. The content of this manual, its various associated websites and all related correspondence are neither a solicitation nor an offer to purchase or sell any financial instrument.

Although every attempt has been made to assure accuracy, I do not give any express or implied warranty as to its accuracy. I do not accept any liability for error or omission. Examples are provided for illustrative and educational purposes only and should not be construed as investment advice or strategy.

No representation is being made that any account or trader will or is likely to achieve profits or losses similar to those discussed on the web site. Past performance is not indicative of future results.

By purchasing the software or subscribing to my Blog you will be deemed to have accepted these terms in full.

U.S. Government Required Disclaimer

Commodity Futures Trading Commission Futures and Options trading has large potential rewards, but also large potential risk. You must be aware of the risks and be willing to accept them in order to invest in the FOREX, futures and options markets. The past performance of any trading system or methodology is not necessarily indicative of future results.

Getting Started with GridMeUpFX

The **GridMeUpFX** robot requires the “**MetaTrader 4**” trading platform which is freely available from a wide selection of Forex brokers.

New Users

If you do not have MetaTrader 4 installed on your computer then you can download a copy from GoMarkets and request a “demo” account:

[Click here to open an account with GoMarkets](#)

I personally like GoMarkets for several reasons – not least that they are extremely helpful, they do not penalize robot users and they have excellent trade execution speed and spreads.

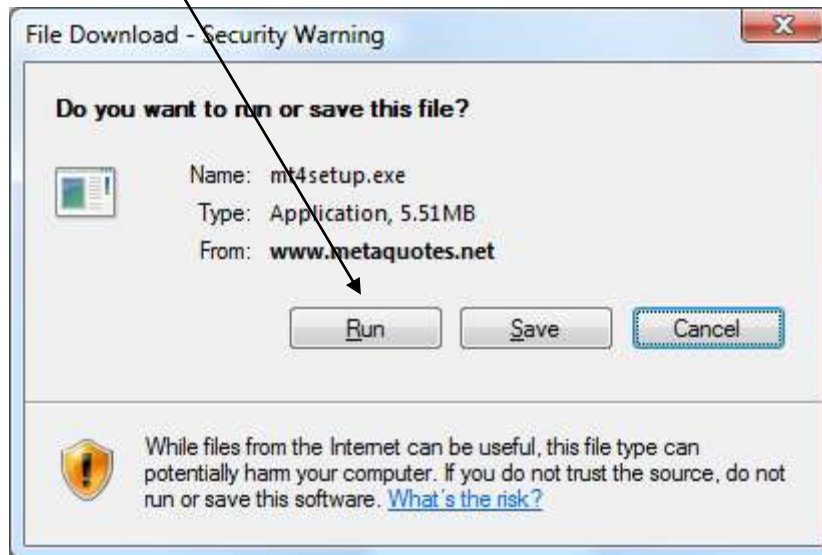
You are free to use any MetaTrader 4 broker you wish but GoMarkets is my first choice and would suggest that you evaluate them even if you already have an account elsewhere.

Note: Regardless of your chosen broker and regardless of whether you have a live or practice account, the actual setup processes for both MetaTrader 4 and the GridMeUpFX robot are exactly the same.

Let's begin!

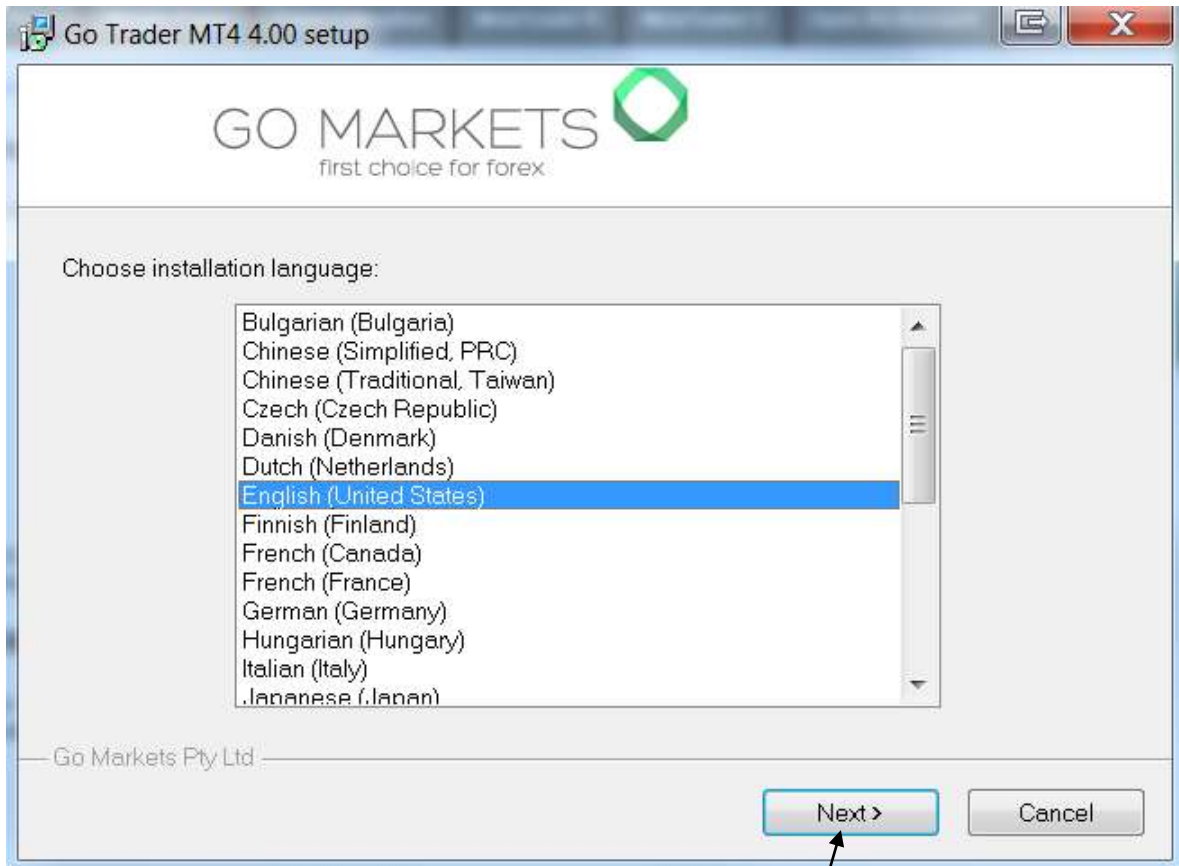
If you decide to download a new copy of MetaTrader from GoMarkets or another broker then you will normally need to submit your details, after which you will be presented with a download link from their website.

Left-click the link and
...simply click the **"Run"** button.

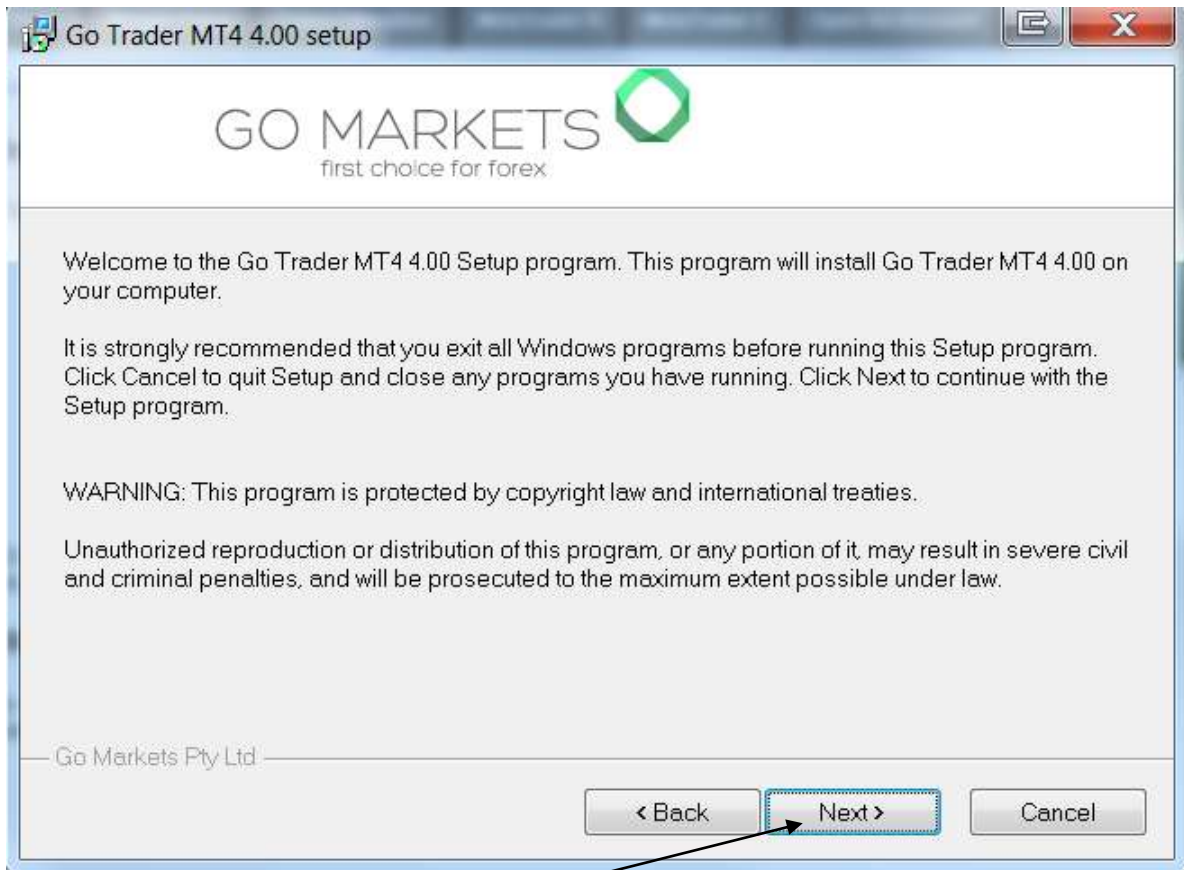


You are likely to be asked to confirm that you know / trust the source of the file and that it is okay to continue – this is perfectly normal and simply a function of the Windows in-built security system so just agree to any questions asked.

As you make your way through the installation process you will see screens that look very similar to the following:



Select your preferred language then click the "**Next**" button to continue...



Click the "**Next**" button to continue...

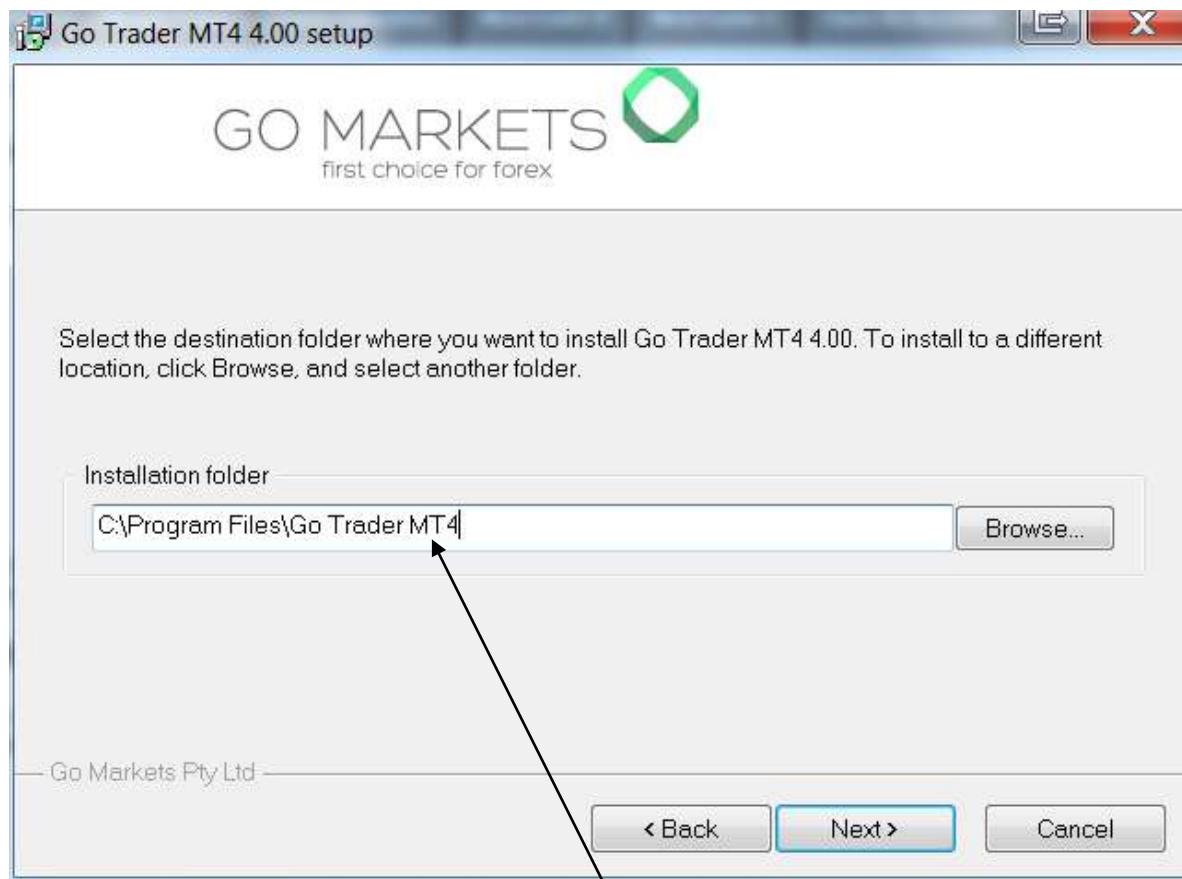


Check the "agreement" box...

(the "**Next**" button remains inactive until the agreement box is checked)



Click the "**Next**" button to continue...



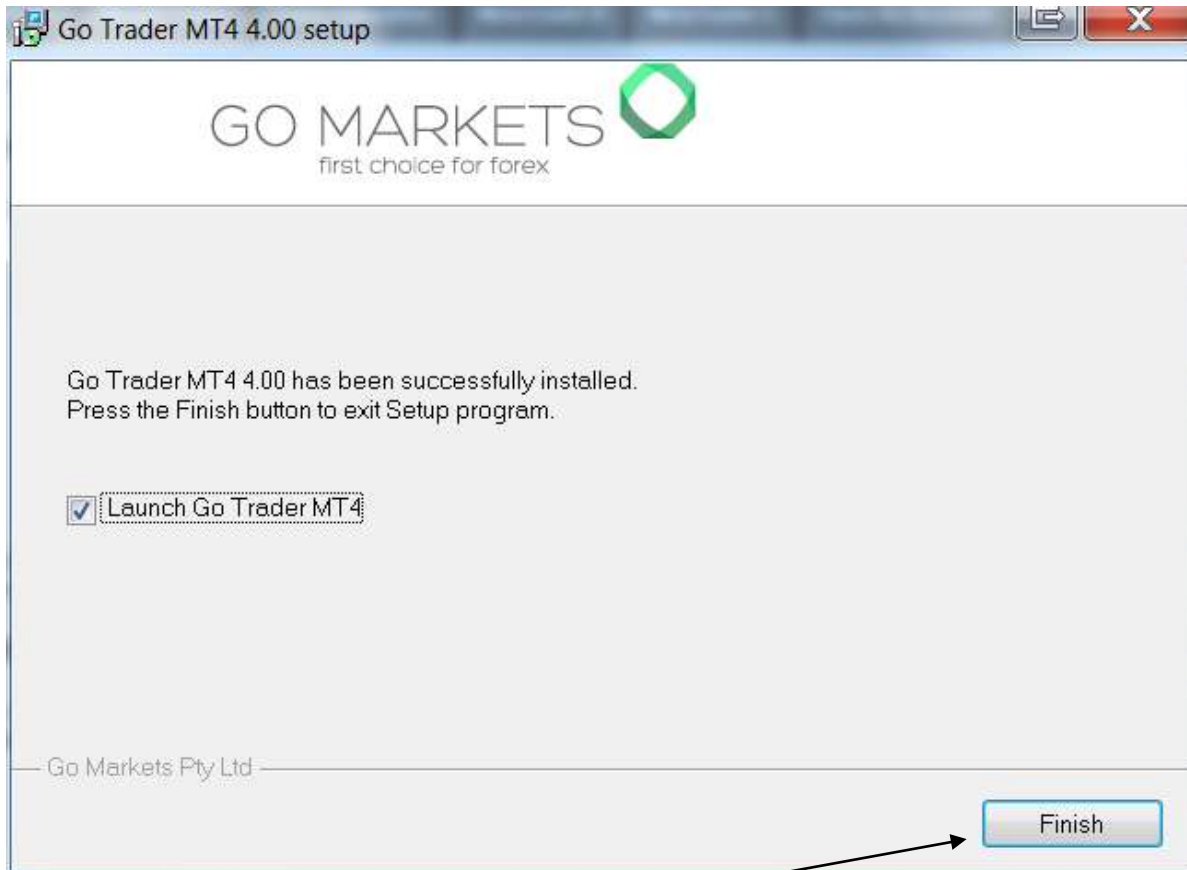
Important: Make a note of the installation folder – you will need to know the location later in order to install GridMeUpFX.



Click the "**Next**" button to continue...



Click the "**Next**" button to continue...



Click the "**Finish**" button...

When MetaTrader 4 starts up for the first time, you will need to create a "demo" / "practice" account.

The screenshot shows a window titled "Open an Account" with a sub-section "Personal details". Below the title, it says "To open an account, please fill out all the following fields:". The form contains the following fields and validation messages:

- Name: [] min 6 chars
- Country: Australia [v]
- State: [] min 2 chars
- City: [] min 2 chars
- Zip code: [] min 2 chars
- Address: [] min 6 chars
- Phone: [] min 6 chars
- Email: name@company.com
- Account Type: Forex-AUD [v]
- Currency: AUD
- Leverage: 1:100 [v]
- Deposit: 5000 [v]
- I agree to subscribe to your newsletters

At the bottom, there are three buttons: "< Back", "Next >", and "Cancel".

First, complete...

...the details shown in **red**

...then select your country

...then check the "agreement" box...

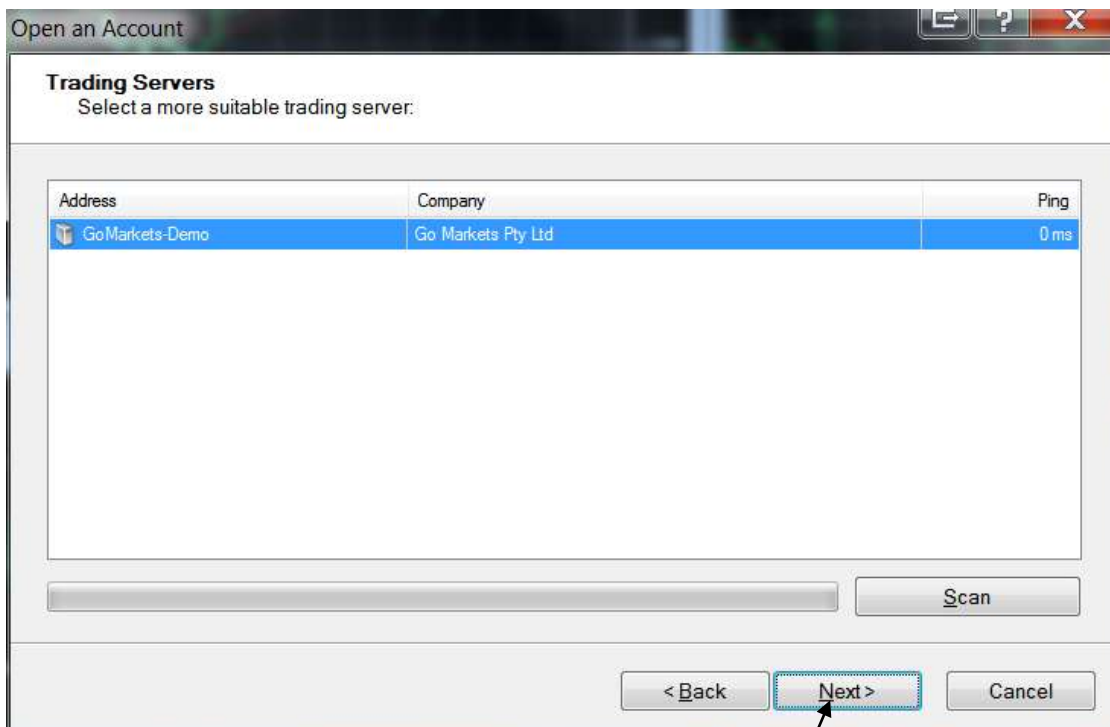
The screenshot shows a window titled "Open an Account" with a "Personal details" section. The instructions state: "To open an account, please fill out all the following fields:". The form contains the following fields and values:

- Name: [Empty] (min 6 chars)
- Country: Australia (dropdown)
- State: [Empty] (min 2 chars)
- City: [Empty] (min 2 chars)
- Zip code: [Empty] (min 3 chars)
- Address: [Empty] (min 6 chars)
- Phone: [Empty] (min 6 chars)
- Email: name@company.com
- Account Type: Forex-AUD (dropdown)
- Currency: AUD
- Leverage: 1:100 (dropdown)
- Deposit: 5000 (dropdown)
- I agree to subscribe to your newsletters

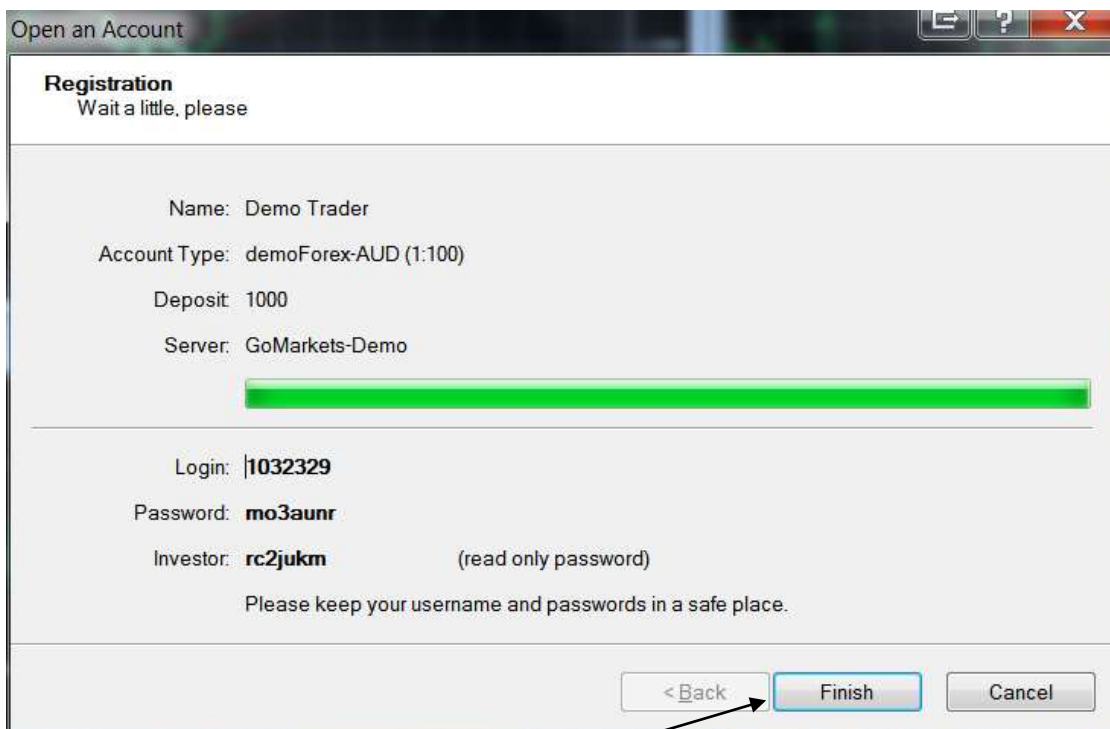
At the bottom, there are buttons for "< Back", "Next >", and "Cancel". Three arrows point from the text below to the "Account Type", "Leverage", and "Deposit" dropdown menus.

...then change the **"Account Type"**, **"Leverage"** and **"Deposit"** settings as shown to best match what your live trading account will be.

If you are considering funding a live account with an amount between \$500 and \$10,000 then the "Deposit" setting for your demo/practice account should ideally be similar to this amount.



Normally on this screen you can just click the "**Next**" button to continue...
(if more than one server is listed, select one with "Demo" in its name;
otherwise just leave the default server selected)

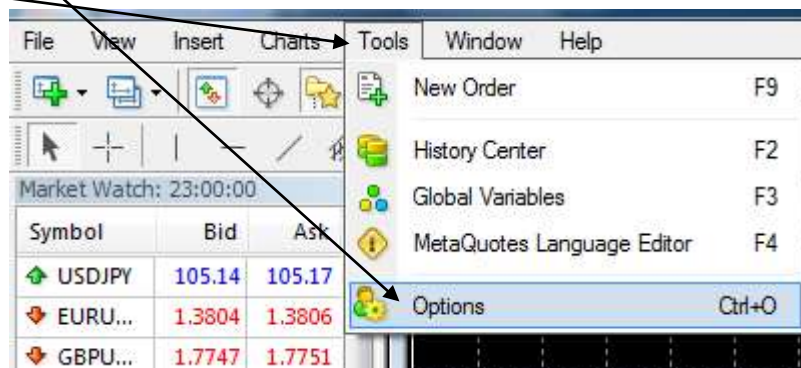


Finally, click the "**Finish**" button to complete the installation process.

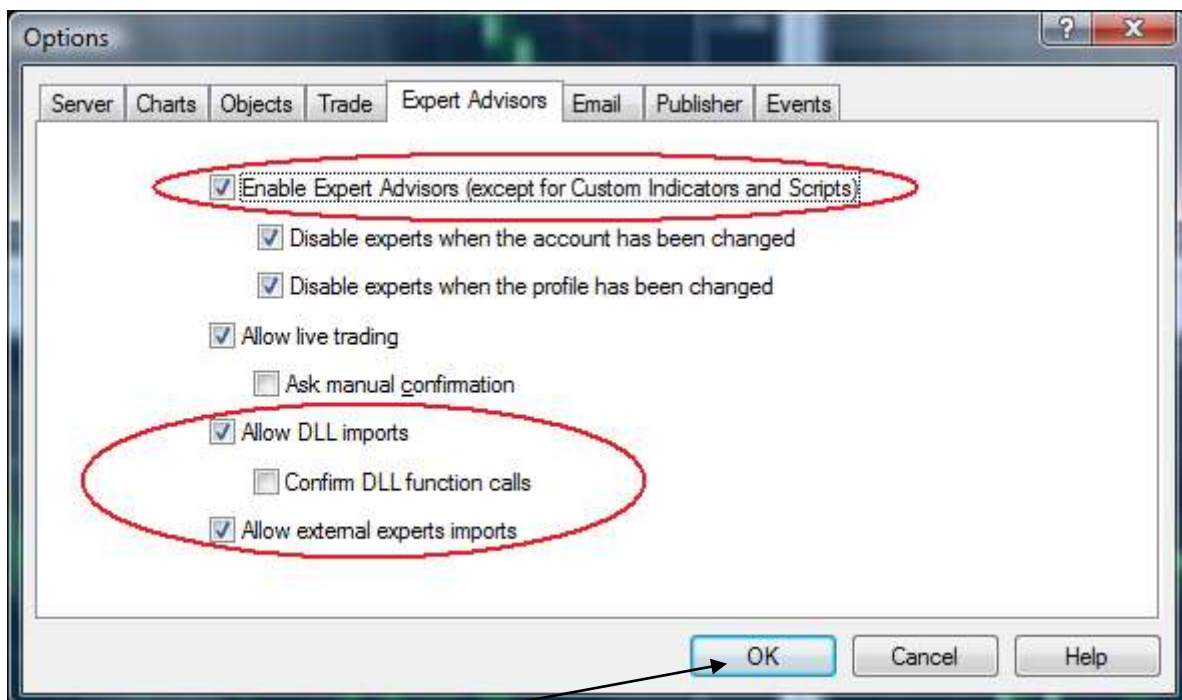
Configuring MetaTrader 4

Once MetaTrader 4 has been installed and loaded, the next thing to do is go to the

Tools – Options menu.

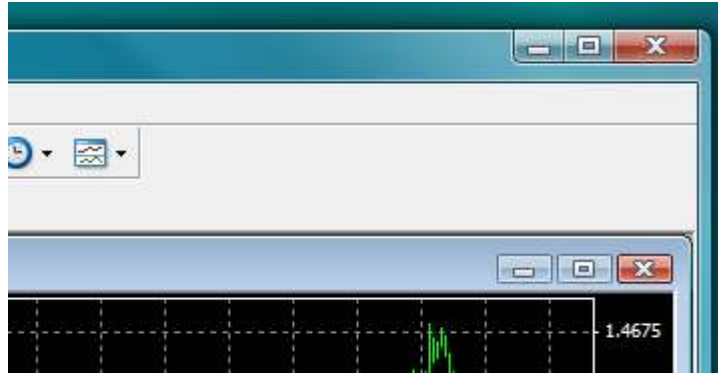


Select the **Expert Advisors** tab and ensure that the highlighted options are set as shown below:



Click the **“OK”** button to continue.

The next step is to install the GridMeUpFX robot but before doing so, MetaTrader 4 should be closed down by clicking the large "X" button in the top-right of the application window as shown:



Installing the GridMeUpFX Robot

Use the [GridMeUpFX Easy Installer](#) to install GridMeUpFX into the appropriate Metatrader installation on your computer. The easy installer download link is located in the "Latest Version" thread on the [members forum](#).

GridMeUpFX Enhanced is protected from piracy via the Guardian system. In order to use the enhanced version (BASIC version is not protected) you will need to install the Guardian client onto your PC. The Guardian client will automatically begin to install after the GridMeUpFX easy installer is complete. Follow the prompts to complete the Guardian installation. Once the guardian client is installed onto your PC you will need to add the Guardian license via the [License Manager](#) within the guardian client. If you have purchased the enhanced version you can obtain the Guardian license from the "Latest Version" thread of the [members forum](#).

* Ensure Guardian is running before starting Metatrader 4 software. (Usually located under [Programs/Guardian](#) in your Windows menu)

If you use the easy installer to install GridMeUpFX then please skip to the "Using the GridMeUpFX Robot" section on page 26. If you wish to manually install GridMeUpFX then follow the instructions beginning in yellow below and the proceeding pages.

The guardian client can be manually downloaded [from here](#).

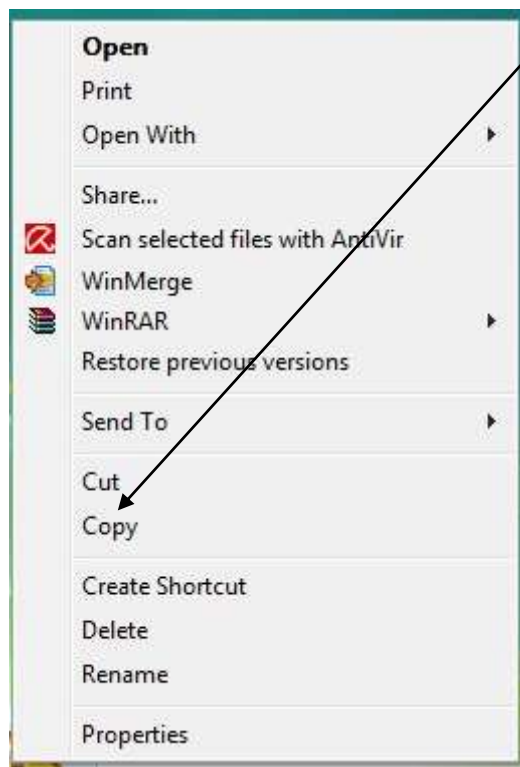
The **GridMeUpFX** system consists of 3 files:

- The robot file (GridMeUpFX.ex4 or GridMeUpFX..s.ex4)
- The quick reference guide (GridMeUpFX-Quick Reference.pdf)
- This Installation Manual

Once you have the files on your computer, you will need to locate them.

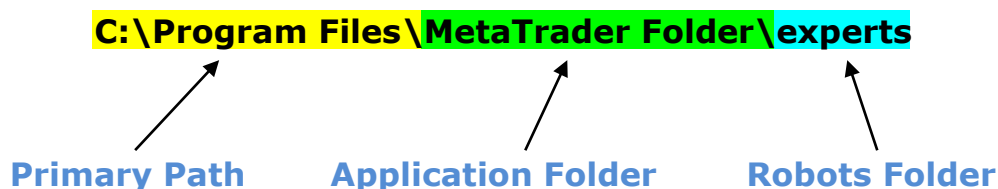
NOTE: The robot is a ".ex4" file, not a ".exe" file. Do **NOT** attempt to execute it as it will not run as a Windows application, it can only function within the MetaTrader 4 trading platform.

Locate **GridMeUpFX..s.ex4** on your computer and simply right-click over the name or icon to bring up the context menu and select **"Copy"**.



The next step is to locate the correct folder to install/paste the robot into.

As standard **all** installations of MetaTrader 4 follow a specific convention for installing the various files which make up the MetaTrader system:



Unless you have deliberately chosen a different location, the Primary Path "C:\Program Files" will always remain constant. The only variation appears in the newer 64-bit (x64) versions of Windows. On these systems the older technology 32-bit applications such as MetaTrader 4 are installed into the "C:\Program Files (x32)" folder.

By contrast, the Application Folder varies for every broker's version of MetaTrader 4 and is the reason for the earlier suggestion to make a note of the installation folder during the MetaTrader 4 installation process.

If you are not certain where your installation is located then one simple way of finding out is to position your mouse cursor directly over (do **not** click!) the icon on your Windows Desktop that you use to start MetaTrader 4...



...and the location will be displayed.

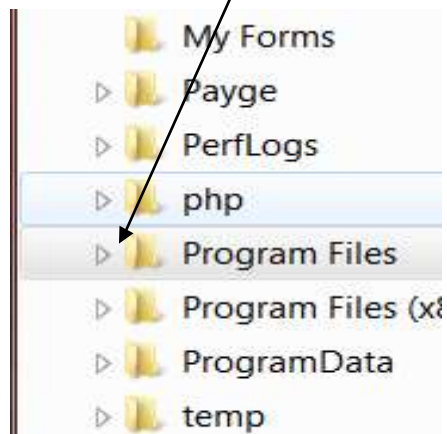
As you can see, in this case it is: "C:\Program Files\Go Trader MT4"

Having confirmed the location of MetaTrader 4, it is a simple task to navigate there and install/paste the robot.

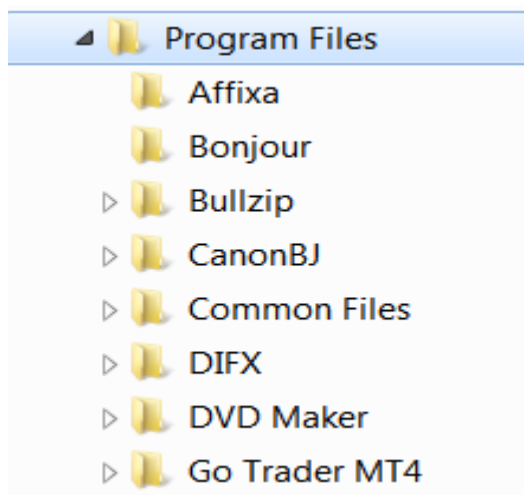
To do this, you can use either the **My Computer** (Windows XP) or **Computer** (Windows Vista/7) located on your **Start** menu.

Begin by navigating to the "Program Files" folder.

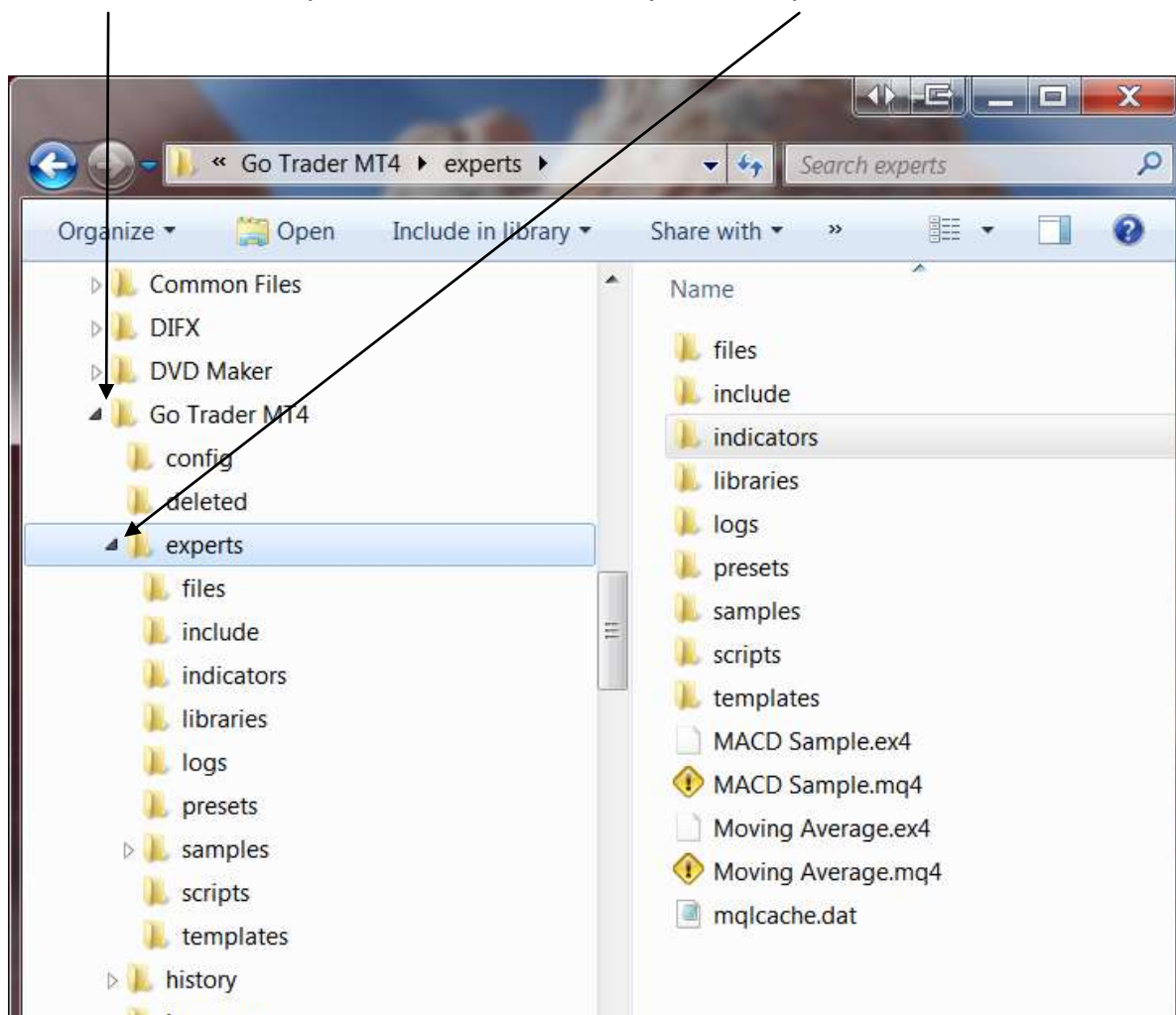
The next step is to expand out the "Program Files" folder by clicking the small **[+]** (Windows XP), or small arrow (Windows Vista and Windows 7) to the left of it...



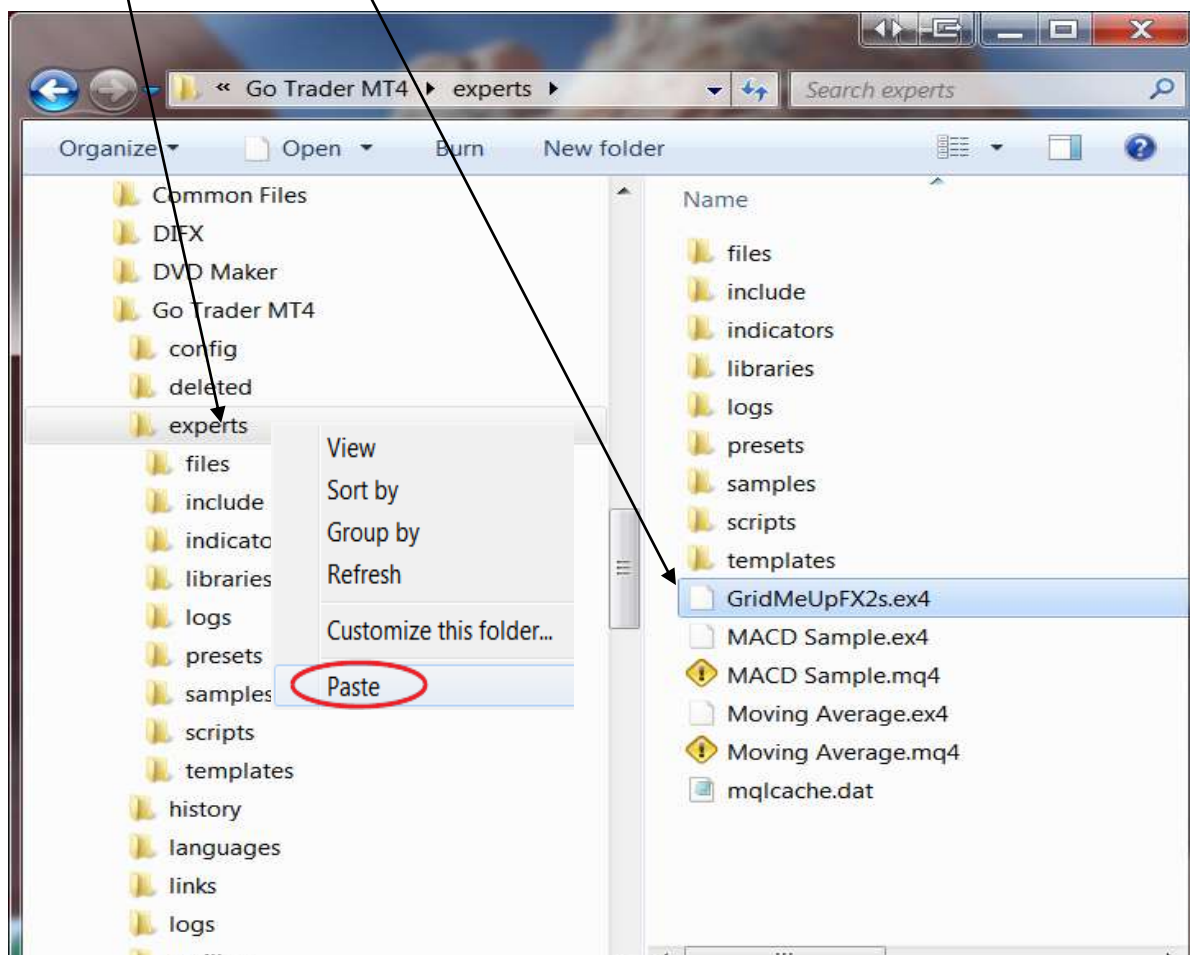
...so it looks something like this:



Now scroll through the list of folders to locate the installation folder for MetaTrader and expand that, followed by the "experts" folder:



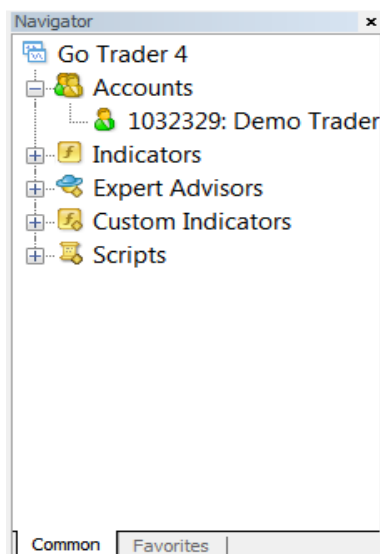
Right-click on the "experts" folder to bring up the context menu and select "**Paste**"... and the robot will appear listed in the "experts" folder
...as you can see here:



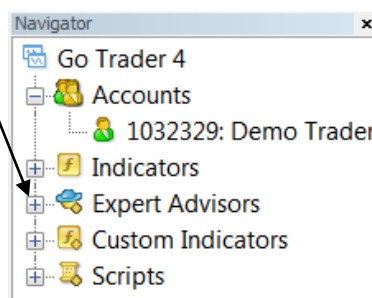
GridMeUpFX will now be available to you from within MetaTrader 4.

Using the GridMeUpFX Robot

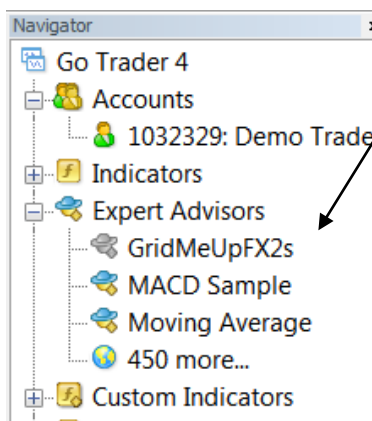
Having installed the robot, restart MetaTrader 4 (ensure Guardian is loaded) and check the Navigator pane on the left side of the MetaTrader 4 window:



Clicking the small [+] to the left of "Expert Advisors"...



...will expand that section to display the available experts (robots):



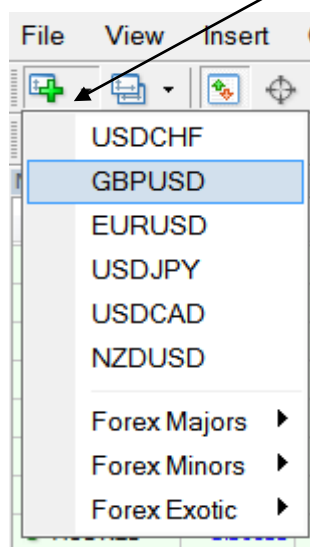
If everything is correct then the list will contain the "**GridMeUpFX..s**" robot along with any other expert advisors that you have installed or were provided as part of the MetaTrader 4 system.

Please note that the GridMeupFX icon is **gray** whilst other icons in the list are colored – **this is perfectly normal.**

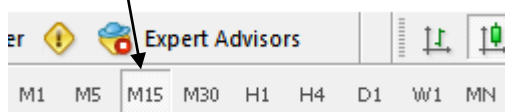
A colored icon means that you have the "source code" for that particular expert i.e. the instructions that tell the expert how to trade. A gray icon means that you do not – almost all commercial experts will be gray.

Setting Up For Trading

To begin trading, you will require a **GBP/USD chart**. You can either use an existing chart (if no other expert advisor is attached to it) or just open a new one. To open a new chart, click the **New Chart** button in the toolbar:



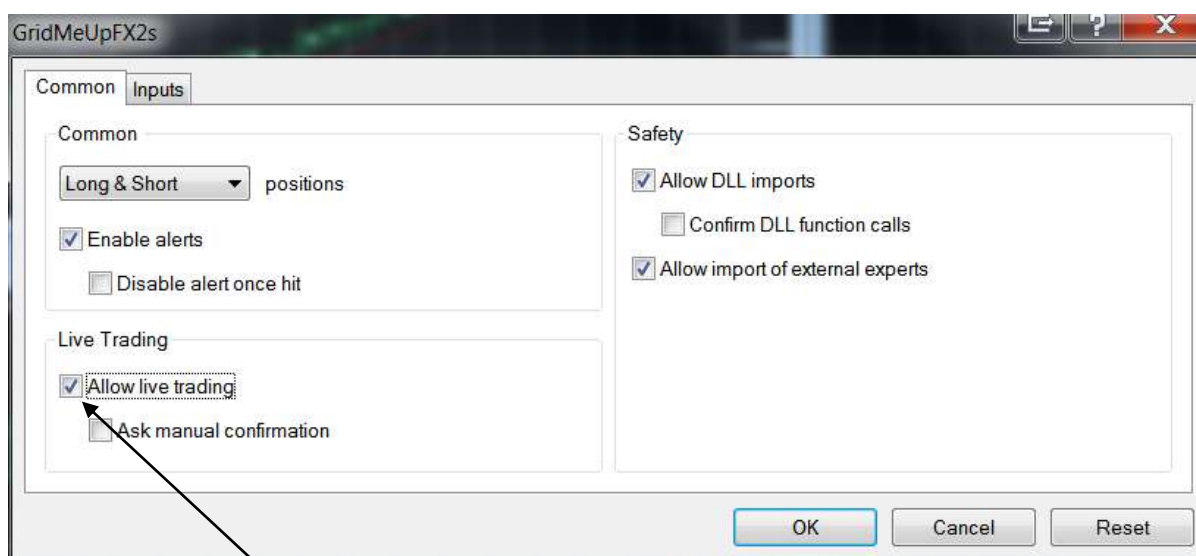
...then click GBPUSD. The chart timeframe usually defaults to "H1", so simply click the **M15** button in the toolbar:



Once the chart is open, left-click (and hold the left mouse button down) the "**GridMeUpFX..s**" icon in the Navigator and drag it to the GBPUSD chart and let go of the mouse button (drag and drop).

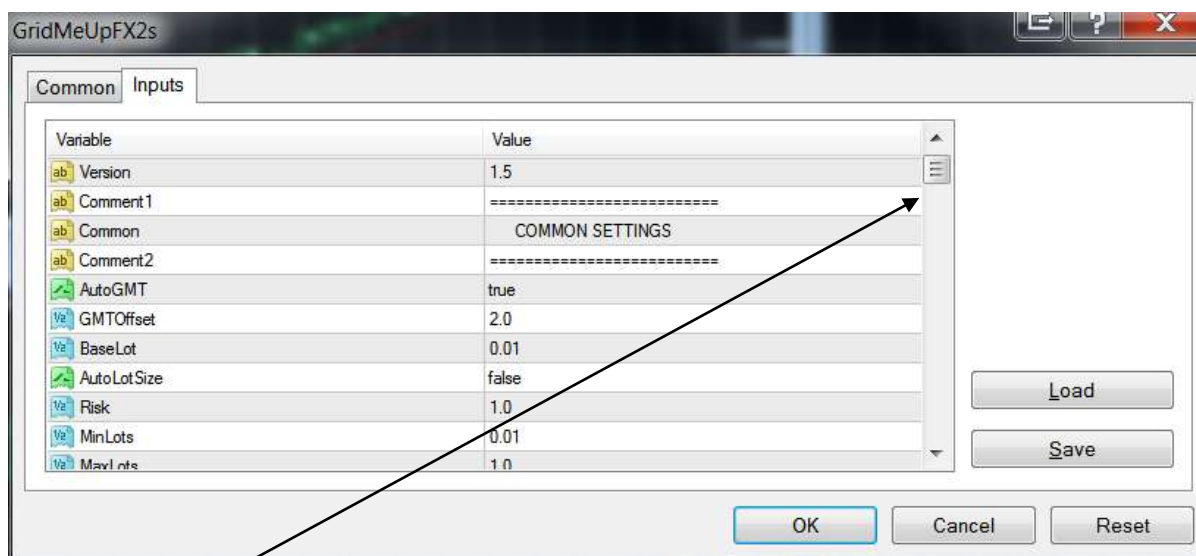
When you drop the expert advisor onto the chart, a "Properties" dialog window will open. The dialog contains two tabs – "Common" and "Inputs".

The "**Common**" tab looks like this:



Make sure "Allow live trading" is ticked or the robot will not function.

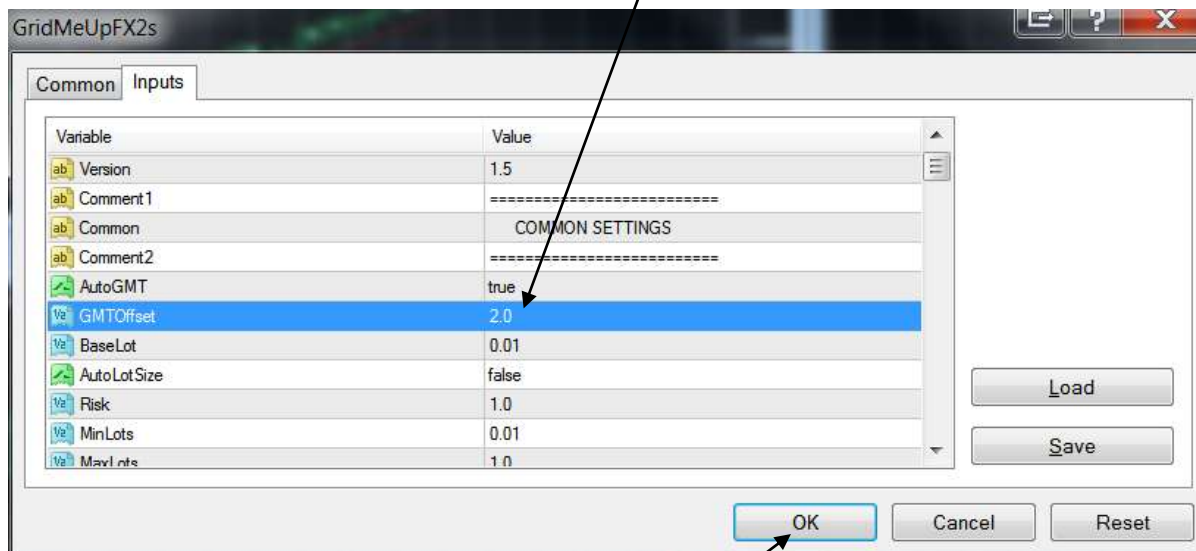
The **"Inputs"** tab looks like this:



By scrolling the list, you will see that the Inputs tab has a number of adjustable settings which are explained in the **"GridMeUpFX - Quick Reference"**.

To change the value of any setting, double-click the **Value** column.

For example, to change the "GMTOffset" setting, simply activate the property editor by double-clicking the **value** area as shown below and the property editor will activate.



Once changes are complete, click the "OK" button to restart the robot.

Preparing To Trade

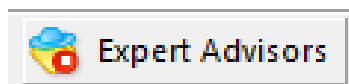
That is about all there is to do!... everything has been set up, all of the parameters have been configured so the only thing left to do is click the **OK** button to start the robot trading!

Depending on how well you have followed instructions so far, there will be one of three possible symbols displayed in the top-right corner of the chart with the robot attached:

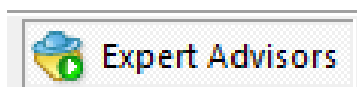
The first possibility is an "X" as shown below.



This means that expert advisors have not been enabled and can be confirmed by the red "Expert Advisors" button in the toolbar:



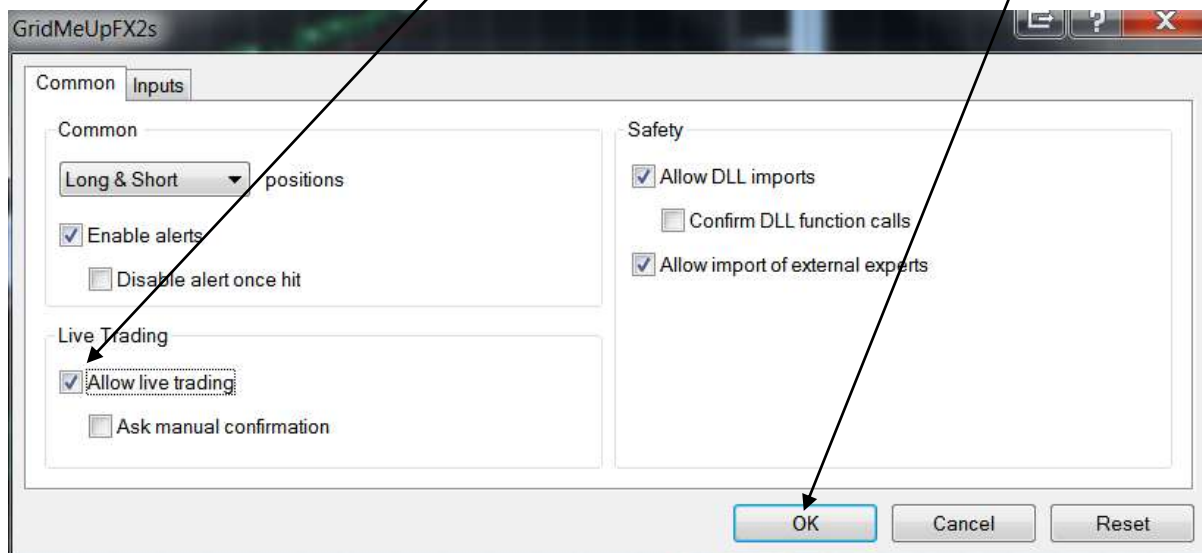
Simply click the button to turn it green and enable expert advisors:



The next possibility is a sad face, as shown here:



This means that the Common tab settings are incorrect. Either press the "F7" key or click the sad face to open the properties dialog window again then confirm that the "Allow live trading" setting is checked before clicking the "OK" button.



The final possibility is a smiley face which means the robot is configured correctly:



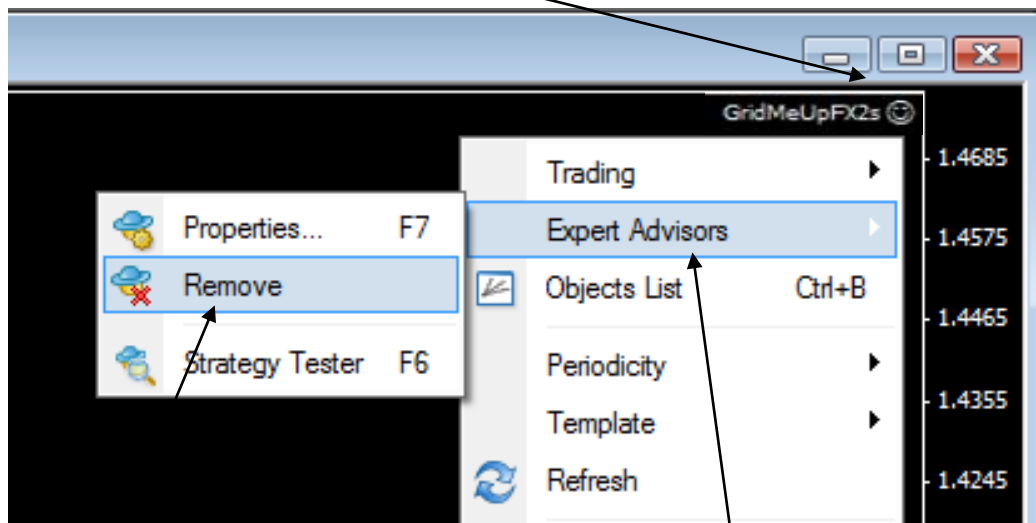
Stop Trading

There are four ways to stop the **GridMeUpFX Robot** from trading:

- 1) Click the green "Expert Advisors" button in the toolbar – please be aware that this will also stop any other expert advisors that you may be running.

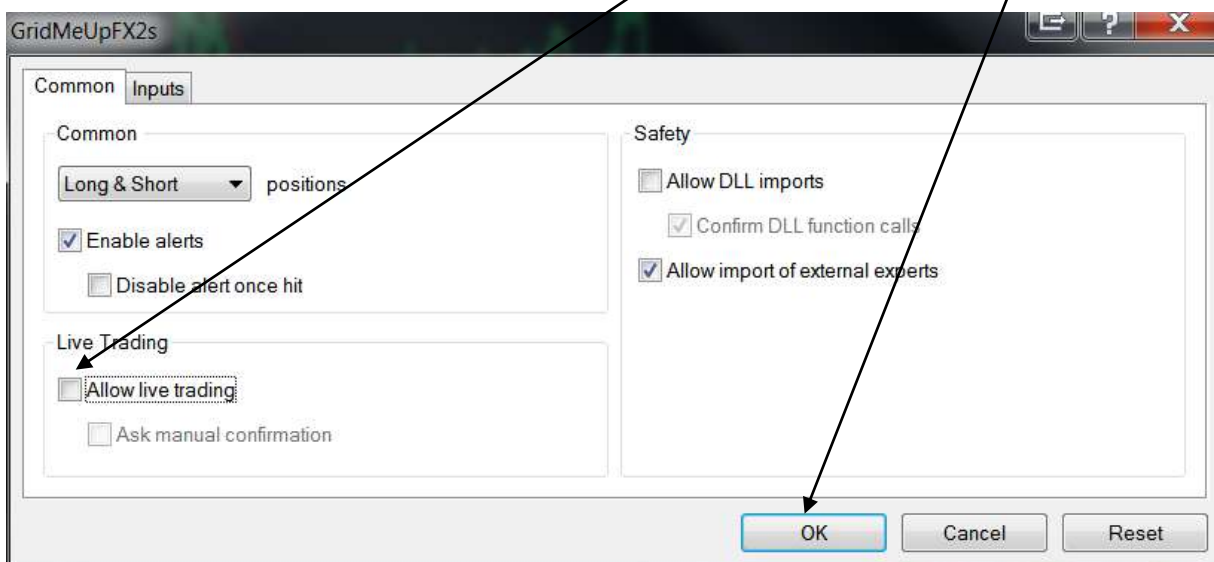


- 2) Right-click the smiley face in the top-right of the chart window

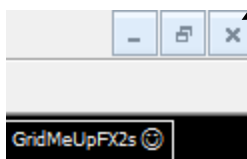


When the context menu appears, select **Expert Advisors** then **Remove**

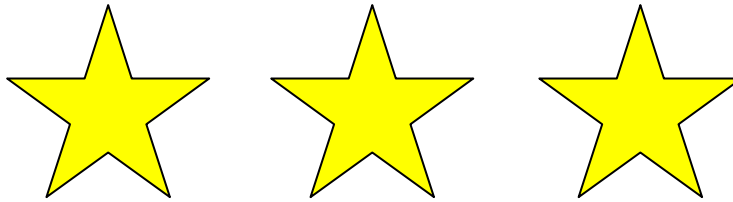
- 3) Click the GBP/USD chart then press the **F7** key to open the properties dialog window. Once the properties dialog window is open, switch to the "Common" tab and **un-check** the "Allow live trading" option before clicking the **OK** button.



- 4) Last, but not least, simply close the chart by clicking the "X" button in the top-right corner of the chart window.



Do not click the red "X" button in the top-right corner of the MetaTrader window unless you actually want to close MetaTrader.



That now completes the Installation Guide and I hope you were successful at installing your new Forex robot :-)

Please refer to the Quick Reference for specific robot settings....

HAPPY & PROFITABLE TRADING!!!